

Long Leg Joist Hangers

LL

Timber to timber joist hangers; designed for use in loft conversions where the hanger extends below the support.

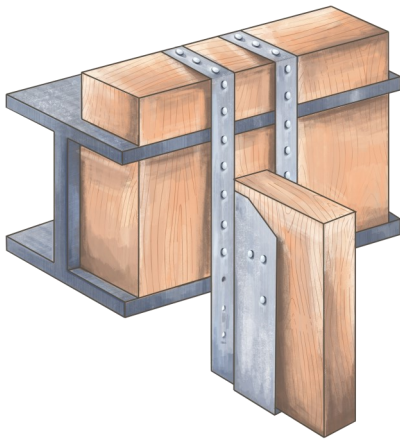
- The superior design does not require wide straps making them easier to install on site.
- Loads below are from tests where the Long Leg is hung 100mm below the support with all available holes nailed.
- Far greater load carrying capabilities than other leading brands.
- 450mm and 600mm legs available.

SPECIFICATION

- Tested by Lucideon Ltd.

INSTALLATION

- All holes should be nailed using 30 x 3.75 square twist nails or equivalent, for stainless steel products use 30 x 3.75 stainless steel annular ring shank nails.
- Always ensure that compatible corrosion resistant fixings are used, i.e. do not use galvanised fixings with stainless steel products or vice versa.



Long Leg Joist Hangers

LL

Code	Product	Product Dimensions (mm)			Joist size (mm)	Characteristic Value (kN) for Eurocode 5	Safe Working Load for BS5268 (kN)			Box Qty.
		Width	Leg	Joist bearing			Short Term	Medium Term	Long Term	
Pre Galvanised Steel EN 10346 DX51D Z275 - 1.2mm										
LL38X450	Woody Long Leg	38	450	50	38 x 175 to 250	28.04	14.02	13.35	11.68	25
LL38X600	Woody Long Leg	38	600	50	38 x 210 to 300	28.04	14.02	13.35	11.68	25
LL44X450	Woody Long Leg	44	453	50	44 x 150 to 250	28.04	14.02	13.35	11.68	25
LL44X600	Woody Long Leg	44	600	50	44 x 200 to 300	28.04	14.02	13.35	11.68	25
LL47X450	Woody Long Leg	47	445	50	47 x 150 to 250	28.04	14.02	13.35	11.68	25
LL47X600	Woody Long Leg	47	600	50	47 x 200 to 300	28.04	14.02	13.35	11.68	25
LL50X450	Woody Long Leg	50	445	50	50 x 150 to 250	28.04	14.02	13.35	11.68	25
LL50X600	Woody Long Leg	50	600	50	50 x 200 to 300	28.04	14.02	13.35	11.68	25
LL63X450	Woody Long Leg	63	440	50	63 x 175 to 250	28.04	14.02	13.35	11.68	25
LL63X600	Woody Long Leg	63	600	50	63 x 220 to 300	28.04	14.02	13.35	11.68	25
LL76X450	Woody Long Leg	76	435	50	76 x 175 to 250	28.04	14.02	13.35	11.68	25
LL76X600	Woody Long Leg	76	600	50	76 x 220 to 300	28.04	14.02	13.35	11.68	25
LL90X450	Woody Long Leg	90	425	50	90 x 150 to 250	28.04	14.02	13.35	11.68	25
LL90X600	Woody Long Leg	90	600	50	90 x 200 to 300	28.04	14.02	13.35	11.68	25
LL100X450	Woody Long Leg	100	420	50	100 x 150 to 250	28.04	14.02	13.35	11.68	25
LL100X600	Woody Long Leg	100	600	50	100 x 200 to 300	28.04	14.02	13.35	11.68	25
LL125X450	Woody Long Leg	125	450	50	125 x 175 to 250	28.04	14.02	13.35	11.68	15
LL125X600	Woody Long Leg	125	600	50	125 x 220 to 300	28.04	14.02	13.35	11.68	25
LL132X450	Woody Long Leg	132	450	50	132 x 175 to 250	28.04	14.02	13.35	11.68	15
LL142X450	Woody Long Leg	142	450	50	142 x 175 to 250	28.04	14.02	13.35	11.68	15
LL142X600	Woody Long Leg	142	600	50	142 x 220 to 300	28.04	14.02	13.35	11.68	25
LL150X450	Woody Long Leg	150	450	50	150 x 175 to 250	28.04	14.02	13.35	11.68	15
LL150X600	Woody Long Leg	150	600	50	150 x 220 to 300	28.04	14.02	13.35	11.68	25
Grade 1.4301 Austenitic Stainless Steel to EN 10088-2- 1mm										
LLSS38X450	Woody Long Leg	38	450	50	38 x 175 to 250	-	-	-	-	-
LLSS38X600	Woody Long Leg	38	600	50	38 x 210 to 300	-	-	-	-	-
LLSS44X450	Woody Long Leg	44	453	50	44 x 150 to 250	-	-	-	-	-
LLSS44X600	Woody Long Leg	44	600	50	44 x 200 to 300	-	-	-	-	-
LLSS47X450	Woody Long Leg	47	445	50	47 x 150 to 250	-	-	-	-	-
LLSS47X600	Woody Long Leg	47	600	50	47 x 200 to 300	-	-	-	-	-
LLSS63X450	Woody Long Leg	63	440	50	63 x 175 to 250	-	-	-	-	-
LLSS63X600	Woody Long Leg	63	600	50	63 x 220 to 300	-	-	-	-	-
LLSS76X450	Woody Long Leg	76	435	50	76 x 175 to 250	-	-	-	-	-
LLSS76X600	Woody Long Leg	76	600	50	76 x 220 to 300	-	-	-	-	-
LLSS90X450	Woody Long Leg	90	425	50	90 x 150 to 250	-	-	-	-	-
LLSS90X600	Woody Long Leg	90	600	50	90 x 200 to 300	-	-	-	-	-
LLSS100X450	Woody Long Leg	100	420	50	100 x 150 to 250	-	-	-	-	-
LLSS100X600	Woody Long Leg	100	600	50	100 x 200 to 300	-	-	-	-	-
LLSS125X450	Woody Long Leg	125	450	50	125 x 175 to 250	-	-	-	-	-
LLSS125X600	Woody Long Leg	125	600	50	125 x 220 to 300	-	-	-	-	-
LLSS150X450	Woody Long Leg	150	450	50	150 x 175 to 250	-	-	-	-	-
LLSS150X600	Woody Long Leg	150	600	50	150 x 220 to 300	-	-	-	-	-